



# COMPANY PROFILE 2019



## Email

info@popularelv.com,  
sunil@popularelv.com,  
guru@popularelv.com

## Phone

+974 6679 7904,  
+974 7713 4309

## Address

P.O.Box #. 18843, Office # 402, Floor-4,  
Building # 51, Old Airport Road,  
Doha – Qatar



**BEST ELV  
(Security  
System &  
BMS) workers  
in QATAR**

*It is a great pleasure to introduce our company' Popular Trading & Contracting W.L.L. an ELV (Security System + BMS) Works Contractor operating in the State of Qatar since 2018.*

# TABLE OF CONTENTS

01 • Introduction

---

02 • Project Quality Plan

---

03 • Our Services

---

04 • Management Teams

---

05 • Business Organization Chart

---

06 • Plant, Equipment and Logistic

---

07 • List of Project Undertaken

---

08 • Project Quality Plan

---

# Introduction

*It is a great pleasure to introduce our company' Popular Trading & Contracting W.L.L. an ELV (Security System + BMS) Works Contractor operating in the State of Qatar since 2018.*

*Our Company is striving to market itself in the competitive Doha market with Security System and BMS works, and all other associated ones.*

*As a Qatari Company with over 100 and plus personnel and with a sizeable project Management Team, and a significant fleet of constructional plants and equipment, we have in the past four Years under Popular itself) taken up many projects as Security System and BMS works Contractor for the different Clients/ other main contracting companies.*

*Customer and Client personalization is at the heart of Popular Trading Contracting values. By catering and providing to each of our Clients individual needs be it commercial or private, and treating every new inquiries a special case, improving services, we have been striving to provide a truly value-added product.*

*It is Popular 'commitment to building long term relationships, built on trust, integrity and respect, regardless of whatever the project and whoever the Client. And Ensuring continuity of the Company's long term performance by creating value added and quality end products exceeding the customer and client, in an environment of mutual respect.*

*We are engaged in and have undertaken the providing of services for the following:*

*# Security System & BMS Works such as (but not limited)*

*Our personal are well knowledge with the general codes & practices and have carried out the relevant works & BMS works in many different projects.*

*To cater to the needs of the customers, Popular have the capable in house, from project managers to engineer foremen and technician.*

*Instrumentation, Fire detection, IP CCTV, data networking, public address system Access Control, Parking Management System, Intruder Alarm, Structure Cabling, Intercom, Fire Fighting & FM200 required for the buildings*

# Company / Business Details

- 01 COMMERCIAL NAME  
*Popular Trading & Contracting W.L.L.W.L.L.*
- 02 COMMERCIAL REGISTRATION NO.  
*107644*
- 03 YEAR ESTABLISHED  
*06-02-18*
- 04 ACTIVITIES  
*Security system & BMS SYSTEM*
- 05 OWNER  
*Mr.Saeed Mubarak S A Al- Rashid*
- 06 LOCATION AND ADDRESS  
*Umm Guwalina, St- 310, Bld -51, Office No: 402*
- 07 POSTAL ADDRESS  
*18843*
- 08 TELEPHONE NO.  
*+974 44919077*
- 09 EMAIL  
*info@popularelv.com*
- 10 WEB SITE  
*www.popularelv.com*

## WHAT WE CAN DO

### FIRE ALARM SYSTEM

*Supply & install commission and maintain fire alarm system our experts will ensure that your assets and your people are protected, while also confirming that systems are in compliance with applicable standards*

*Popular provides best and high quality equipment for fire alarms. we provide total fire protection solutions with trusted guarantee on all our products*



### PUBLIC ADDRESSABLE AND GENERAL ADDRESSABLE

*We design, Supply, Install and Maintain Speaker security systems to all commercial and industrial buildings and guarantee the quality of our products and services.*



## WHAT WE CAN DO

### IP CCTV

*Popular is specialized in providing total integrated security solutions right from security systems to physical security. We supply, design, install, configure and provide maintenance support over temporary or permanent contracts.*

*Popular Security has in house qualified, experienced and certified engineering as well as technical teams to provide appropriate solutions desired by our esteem clients. Popular Security provides customized security solutions by re-engineering the technology to meet its esteem client's specific requirement.*



### ACCESS CONTROL SOLUTIONS

*Controlling access to your facility electronically is the logical choice for increasing security and reducing cost. client-server or web-based access control solutions for any sized business including, fully integrated solutions for enterprise clients as well as hosted solutions for simple cost effective systems management.*



## WHAT WE CAN DO

### **BUILDING MANAGEMENT SYSTEM**

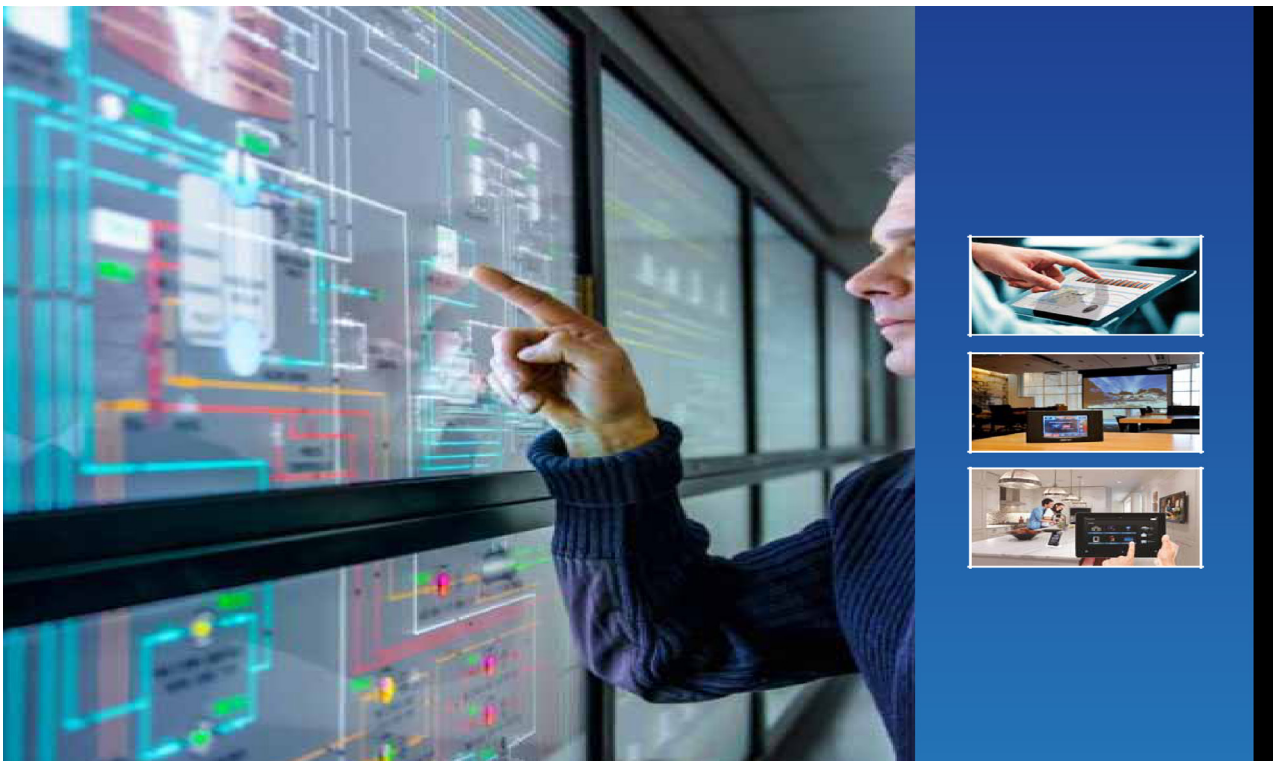
*We provide Building Automation and home automation that handles many home tasks thus improving comfort level as well as our Building Automation for both industrial and commercial buildings.*

### **ENERGY MANAGEMENT SYSTEMS**

*We provide innovative and sustainable energy management solutions with technologically advanced design and implementation that allows our customers to enjoy significant savings on energy cost.*

### **STRUCTURED CABLING**

*Popular specializes in installation termination voice, data, fiber optic, and LAN rollouts based on reliable, high-quality, and standards-based cabling and network infrastructure components.*

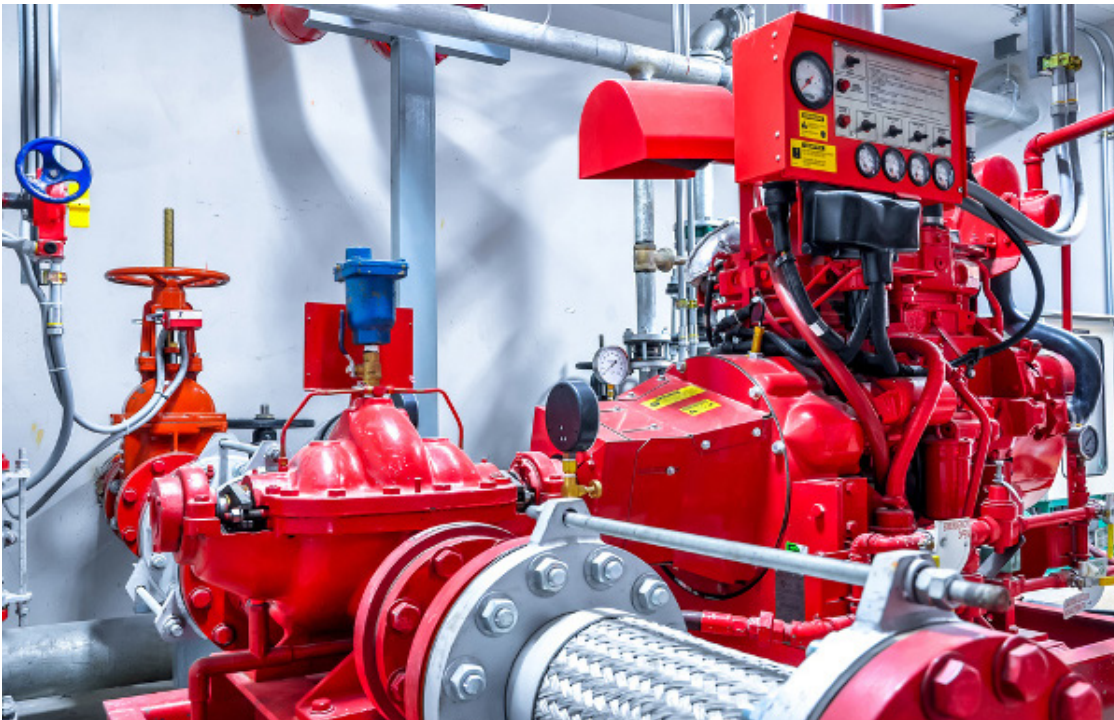




## WHAT WE CAN DO

### FIRE FIGHTING

*Our highly trained and engineers are experienced at designing, supplying, installing, monitoring, testing and commission*



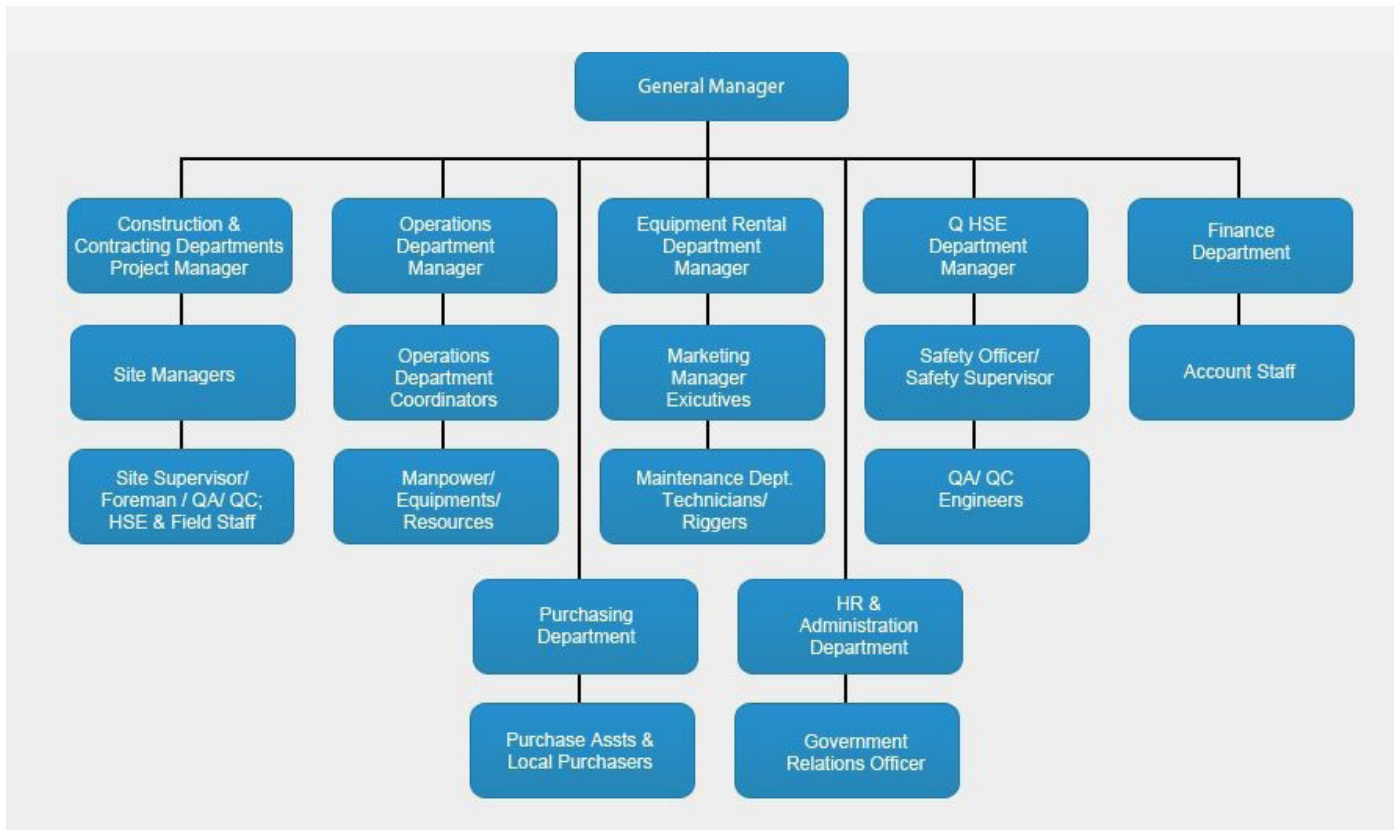
## MANAGEMENT TEAMS

*Manager successful Execution of the projects. This Division under the Management of Engineer in direct coordination and supervision of the General Manager has successfully maintained the Clients, Customers, satisfaction so far.*

*The Management teams are organized as per the cycle presented hereunder:*



# BUSINESS ORGANIZATION CHART



## LIST OF PROJECTS UNDERTAKEN

01 • Al Ahmadani Medical Center CCTV ( HIKISION )

---

02 • Doha Celebration Halls CCTV ( HIKISION )

---

03 • Al Borg Laboratory CCTV ( HIKISION )

---

04 • Ahmadani Clinic CCTV ( HIKISION )

---

05 • Aster Clinic Gharafa CCTV ( HIKISION )

---

06 • Fun Ville Esdan mall Wakra CCTV ( HIKISION )

---

07 • Parcel B Pearl Qatar CCTV ( HIKISION )

---

08 • Qatar Red Crescent CCTV ( HIKISION )

---

09 • Wathnan Mall CCTV ( HIKISION )

---

10 • Bukshisha Al jabber Hotel CCTV ( HIKISION )

---

11 • Al Khaliji Lusail CCTV ( HIKISION )

---

12 • Marina Lusail CCTV ( HIKISION )

---

13 • Middle East Dredging Company (MEDCO NEW PORT) Autronica

---

## LIST OF PROJECTS UNDERTAKEN

14 • Sealine Beach Resort- Mesaieed Siemens

---

15 • Modern Home Darwish Notifier & Simplex

---

16 • Al Tayed Trading GST

---

17 • Midmac White city Compound Siemens

---

18 • Retaj Business GST

---

19 • Al Danah Medical GST

---

20 • Arab Tech Construction Co ZETA

---

21 • Nissan Service Centre GST

---

22 • Qatar Palace Hotel ZETA

---

23 • Biuygues batiment international GST

---

24 • Doha Precast Factory GST

---

25 • SBA Rayyan Complex GST

---

26 • Halliburton GST

---

## LIST OF PROJECTS UNDERTAKEN

27	• Parco Mall	Notifier
28	• Al Danah Pharmacy	GST
29	• Diplomatic	Cooper
30	• Gallery Furniture	GST
31	• Tariq Auto Mobile	Bosch
32	• Aluminum Fabrication Factory	GST
33	• Golden Toys Industrial Area	Fire Guard
34	• Power 2 Group	GST
35	• Ramadan Tent	Schneider
36	• Telecommunications - MOI	Schneider
37	• South East Car Parking	Panel Site

# PROJECT QUALITY PLAN

## **Scope:**

*The scope of this project quality procedure defines the procedures and controls which will be applied within Popular Trading & Contracting Company on the procurement, handling and installation of products and works. The document is intended to be applicable to all contracts within Popular Company but may be supplemented or varied in response to contractual requirements by a specific contract quality plan with the agreement of the quality controller.*

## **Introduction:**

*This Project Quality procedure defines the procedures and control which have been developed and implemented in Order that the Goods, services, and works provided by Popular are produced under controlled conditions to ensure their conformity to Contract and fitness for purpose with maintaining targets in a cost effective manner.*

## **Purpose:**

*This project quality procedure sets an objective for the employees of Popular namely that all activities within the company must be carried out in such a way that quality, price and delivery of services provided and products supplied are in accordance with the Client's requirements and expectations.*

*The Manual renders the main outlines of the, quality system, adopted by the company, which is a system of procedures and rules having as its objective the achievement of the desired level of quality in the entire concern. The manual is also to Enable potential customers/clients to asses sand understand that quality of products of works is of the utmost importance in Popular.*

## **Applicability:**

*This project Quality Procedure is applicable to all stages of the construction Security system & BMS Installation works projects unless otherwise detailed in a quality plan raised to cover*

*Specific contract requirements. With the development of new techniques in Security system & BMS, Instrumentation installation works, it is a policy of Popular to periodically and Systematically review the*

*Project Procedure to ensure continued effectiveness. The Quality policy of the Popular is to assure that the standards of quality specified are met in all areas to the satisfaction of the Clients and their requirements. The quality controller a representative, have access to all contractual document and are Responsible for ensuring that the quality requirements conflicting with the quality manual contract takes precedence.*

**Organization:**

*The QA/QC is a part of Popular company responsible for all functions affecting quality and has defined responsibility and the authority to identify evaluate quality Problems and to initiate evaluate quality problems and to initiate, recommend and Provide efficient solutions. The head of the department qualify controller is directly responsible to the management and independent of all other. Functions. He has the necessary authority and the responsibility for ensuring that the requirements of quality are Maintained to the standard set out by the company. Some of the duties carried out the quality assurance department are as follows:*

*Promoting preventive measures in all phases of the worn execution process. This is the most important function. It comprises activities such as information. Training and Instruction with respect to quality consciousness, improvement of installation and Termination means, installation method and working conditions. Monitoring the functioning of quality/assurance in the concern this includes activities, such as, evaluation of the quality level in the various departments 'evaluation of client complaints, Evaluation of effectiveness of the method and procedures applied in inspection and quality assurance.*

**Records:**

*Popular records are maintained throughout the company for the following reasons:*

*To define the inspection status of all work and material. For defect analysis to initiate service action and recurrence control. To demonstrate achievement of the required quality and the effective operation of the quality system.*

*These records are retained and made available for evaluation and all essential records of Processes, final inspection and rest of goods installed for a client are maintained for an agreed period.*



**Corrective Action:**

Popular have established and maintained documented Procedures to provide for:

A. continuing monitoring of processes and work operations and analysis of records to detect and dominate potential causes of non-conforming materials.

B. The initiation of appropriate action upon receipt of non-conforming materials.

C. An assurance that corrective actions are effective.

The QA/QC after consideration of the defect analysis investigate and recommend in Collaboration with the appropriate department the remedial' to be taken. This remedial action may be at designs, purchased material, installations, and inspection or test levels, according to the nature of the defect. Where defects are reported-by the Customer the failures are investigated to determine the cause and trigger off the necessary action to prevent a reoccurrence of the fault.

**Documentation Control:**

Popupar maintains drawings, specification sand quality control procedures:  
To this end the projects department ensure that :

A. The pertinent issues of appropriate documents are available at all locations where Operations essential to the effective functioning of the quality system are performed.

B. All changes to documents are in writing and. Are processed in a manner that will ensure prompt action at the specified and effective point.

C. Records are maintained of changes as they are made.

D. Documents are re-issued after practical number of changes have been issued.

D. Provision is made for the removal of obsolete documents from all points of use.

All drawings, test specification, amendments and other work instruction. are issued in authorized manner in order to ensure that only approved changes are permitted unless enclosed by a reference to an officially authorized change,

**Inspection Test Equipment:**

Popular has a system for the calibration control and use of both mechanical and Electronic measuring equipment to ensure that it is suitable to demonstrate the conformance of material to the specified requirements. All test equipments used within the overall control of the quality assurance departmental test equipment is labeled to indicate the current calibration state in order to prevent use beyond the validity of the calibration period, or to state that the equipment is uncalibrated. In the latter case it is used for indication only and not for making measurement against specification drawing requirements.

Where jigs, fixtures, templates, patterns or there such devices are used as suitable forms of inspection, they shall be proven to be capable of certifying the acceptability of material prior to release for use during manufacture, and shall be re-proven at established periods.

The QA department shall establish the extent and frequency of such proving and shall maintain records as evidence of control.

**Installation and Testing:**

Plans, drawings, work instruction sheets, test specification, test procedures, traceability record sheets as maintained for each project.

Each supervisor is responsible for the maintenance and observance of the procedures and records for all the work implement the necessary controls during the manufacture of their products so that compliance with contractual requirements can be achieved. An approval list of suppliers is maintained and this is used for the selection of prospective suppliers,

On receipt of materials in the goods inwards department "receiving inspection" is conducted and all applicable specification requirement. In determining the amount and nature at the

Nature of inspection applied to delivered material. Consideration is given to controls exercised at the suppliers premise and the Objective supplied in the form of certificates, reports etc..

Depending upon the cost and complexity of the purchased item and the difficulty of establishing the required quality standards performance receiving inspection state, actionist taken to specify acceptance inspection test at the supplier's works or after delivery.

*The purchase order defines the requirements fully in terms item description performance and appropriate contract requirements, in the event of non-conformance of purchased items, decisions regarding rectification, concession or rejection to the supplier are made in accordance with the relevant procedure. The materials guaranteed until such action is agreed and carried out and also until any accompany in their areas. In both the construction and the installation and test areas the project engineer is responsible for ensuring that adequate work instruction are provided to the department to enable the work to be implemented in a cost-effective manner.*

*The work flow is shown in the relevant construction procedures where the appropriate control documents are indicated for each stage. As a minimum, inspections are performed during construction no all items that cannot be inspected at a later stage and those it is ensured that they conform to the relevant requirements.*

### **Inspection and Testing:**

*Popular installations is subject to test and inspection in accordance with the detailed Inspection and test procedures for the said item. Prior to handing over to the Client, a final inspection is carried out to ensure:*

- A. Compliance in accordance with contractual requirements*
- B. Compliance of appropriate documentation.*
- C. Incorporation of modifications or rectification.*
- D. Freedom from deterioration or damage*
- E. Endorsement of labels serial numbers or tag numbers*

*Where appropriate any customers inspection and testing is also incorporated into the final test prior to acceptance by the Client. The procedure also ensures that and Inspections or test that have been conducted at earlier stages have in fact been performed and that the relevant date is acceptable*



#### Email

info@popularelv.com,  
sunil@popularelv.com,  
guru@popularelv.com

#### Phone

+974 6679 7904,  
+974 7713 4309

#### Address

P.O.Box #. 18843, Office # 402, Floor-4,  
Building # 51, Old Airport Road,  
Doha – Qatar